

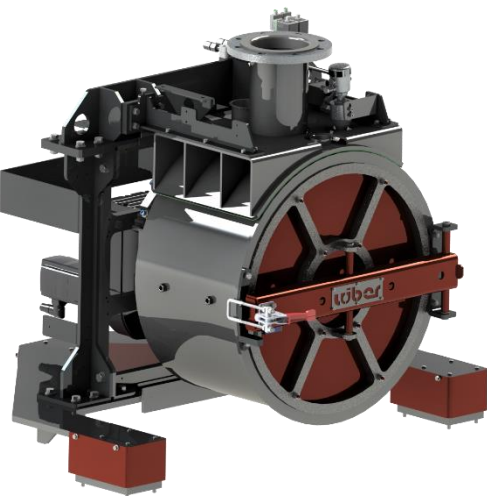


## sand silo / day hopper

- double cell silos for two sand-sorts
- state of the art level measurement with radar level probes
- with repair and dosing flap

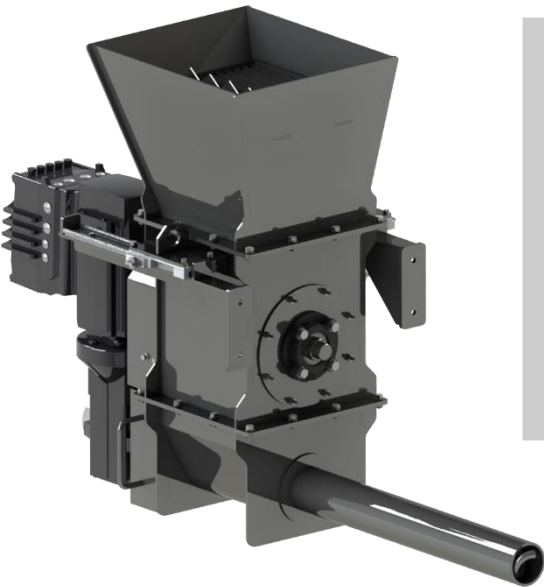
## binder storage and metering

- for storing and dosing of two liquid binder components to ensure a continuous mixing process
- continuous level control and monitoring
- integrated pump for continuous binder circulation
- manual metering in front of the unit
- precise component dosing with electronic gear flow meters and metering valves
- dosing accuracy of  $\pm 1,0$  g



## horizontal high-performance batch mixer with integrated balance

- powerful mixer drive with gear motor
- three arms cast mixer arm with a special wear resistant coating to achieve optimal homogeneous mixtures
- fast and easy cleaning
- special permanent lubricated labyrinth seal prevents leakage of components (sand, binder) from inside the vessel



## additive dosing devices (optional)

- powder additive dosing device for additive bags
- precise dosing due to frequency controlled gear motors for screw actuation
- metering done via mixer load cells
- additive feeding via manual loading with bags
- integrated loosening shaft
- dosing accuracy  $\pm 30\text{g}$
- can be used for all additives customary in the industry with different bulk densities

## electric control

- control: Siemens 1510-F 1PN
- operator panel Siemens TP1500
- all drives: SEW Eurodrive
- One compartment of the cabinet is designated for storage of tools and cleaning materials



## example of configuration LC sand plant

- sand silo for two sand sorts
- horizontal batch mixer HCM
- coldbox or inorganic process (2 liquid components)

core production process:	coldbox, inorganic
plant capacity:	max. 2.100 kg/h
mixer type:	horizontal high-performance batch mixer
quantity of mixers:	1 HCM 70kg
mixer capacity:	up to 2.100 kg/h
number of sand sorts:	2 – new sand and/or reclaimed sand
sand silo volume:	2 x 2 m <sup>3</sup>
sand supply:	by customer with pneum. pressure conveyor
sand metering:	mixer on load cells
sand metering accuracy:	± 1,0 kg (effective metering accuracy much higher, not needed for sand metering)
number of liquid components:	2 liquid coldbox or inorganic binders
volume components tank:	approx. 30l each
components metering:	with electronic gear flow meter
components metering accuracy:	± 1,0 g

